

STANDARD COMPONENTS INCLUDE:

Boom, boom rest, boom hoist cylinder, 2-speed main winch, single speed auxiliary winch, rotation resistant load line and 5 ton (4,5 mt) overhaul ball, LMI & ATB protection systems, subframe with integrated out-down outriggers, a-frame link pedestal outriggers, single rear stabilizer, 3-section pump and hydraulic reservoir.

HYDRAULICS

- 8-Bolt direct mounted PTO with SAE B-B or B output (factory mounted units only)
- 3-Section gear pump, SAE B-B input (standard)

Pump Section	2000 RPM	2000 RPM
Shaft End Pump:	32.4 GPM @ 100 PSI	123 LPM @ 100 PSI
Center Pump:	20.6 GPM @ 100 PSI	78 LPM @ 100 PSI
Cover End Pump:	10 GPM @ 100 PSI	38 LPM @ 100 PSI

- Hydraulic reservoir – 115 gallon (435 liter) capacity

WARNING SYSTEMS

- LMI with display and crane function shut-offs for overload protection with internal boom length sensor cable
- Wireless Anti-two block system
- Back-up alarm

OPTIONS

- LMI with wired ATB system
- Hycas with Wired ATB system
- Hycas with Wireless ATB system
- Removable aluminum outrigger floats
- 18' Flatbed – steel
- 18' (5,5 m) Flatbed – wood
- 18' (5,5 m) Flatbed – Heavy Hauler, 3/16" (4,7 mm) steel
- 24" (609 mm) Bulkhead

BOOM

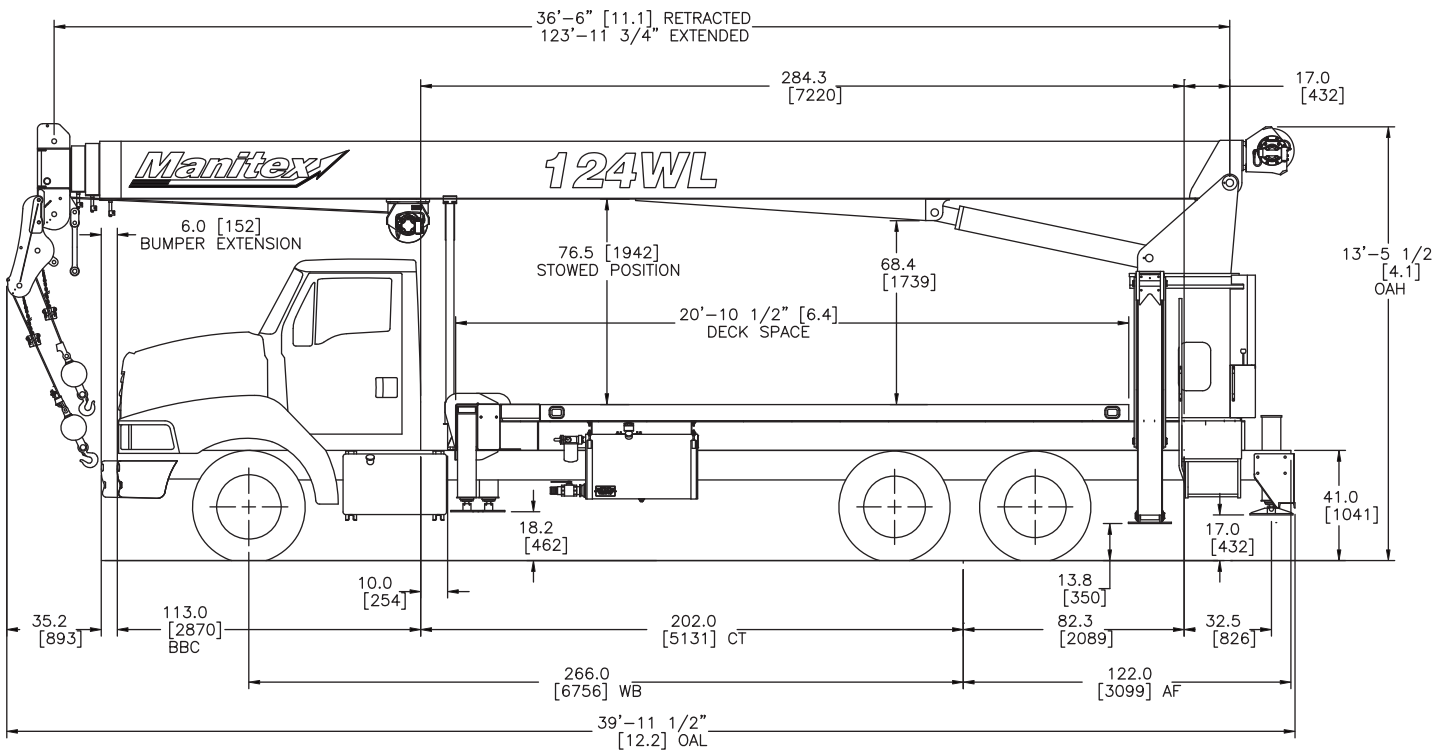
- 30 Ton (27,2 mt) capacity @ 5' (1,5 m) radius
- 4-Section 124' (37,8 m) proportional boom
- 3 Sheave quick reeve boom point
- 1-Sheave auxiliary head & roller guides for wireline rigging

HOIST

- Maximum theoretical bottom-layer line pull for main winch is 11,500 lbs (5,216 kg)
- Maximum theoretical bottom-layer line pull for auxiliary winch is 4,000 lbs (1,814 kg)
- Wire Rope (Main) – 335' (102,11 m) of 9/16" (14,3 mm) diameter rotation resistant type
- Wire Rope (Aux) – 270' (82,3 m) of 3/8" (9,5 mm) diameter rotation resistant type

In order to ensure continuous improvement, Manitex reserves the right to change design and specifications without notice.

- Hydraulic oil cooler
- Three section vane pump, SAE B input
- Toolboxes
 - 24" L x 20" W x 18" H (610 mm x 508 mm x 457 mm)
 - 48" L x 18" W x 18" H (1220 mm x 457 mm x 457 mm)
- Wire Rope type 6 x 25 EIPS IWRC
- Load block - 1 & 3 sheave options
- 4-Function radio remote crane control system



CHASSIS DATA	124WL LMI	124WL HYCAS
Wheelbase (WB)	266" / 6 756 mm	266" / 6 756 mm
Cab to Tandem (CT)	202" / 5 131 mm	202" / 5 131 mm
Cab to End of Frame	324" / 8 230 mm	324" / 8 230 mm
Frame Section Modulus	30 in ³ / 110,000 psi / 758 422 kPa	30 in ³ / 110,000 psi / 758 422 kPa
Front Axle Gross Weight Rating	18,000 lb / 8 165 kg	18,000 lb / 8 165 kg
Rear Axle Gross Weight Rating	40,000 lb / 18 144 kg	40,000 lb / 18 144 kg
Minimum Truck Axle Weight - Front*	8,450 lb / 3 833 kg	8,900 lb / 4 037 kg
Minimum Truck Axle Weight - Back*	8,150 lb / 3 697 kg	8,100 lb / 3 674 kg
Nominal Frame Width	34" / 864 mm	34" / 864 mm

*Minimum chassis weight is required to meet 85% stability requirements. Chassis data is general-not for engineering. Some dimensions depend on truck selection.

WEIGHTS	124WL
Total Crane - Standard	27,113 lb / 12 298 kg
18' Flatbed	1,720 lb / 780 kg
18' Heavy Duty Flatbed	2,500 lb / 1 134 kg

MAXIMUM TIP HEIGHT	124WL
Configuration	Boom 36' 6" / 11.1 m
Extended Boom	134' 8" / 41 m

